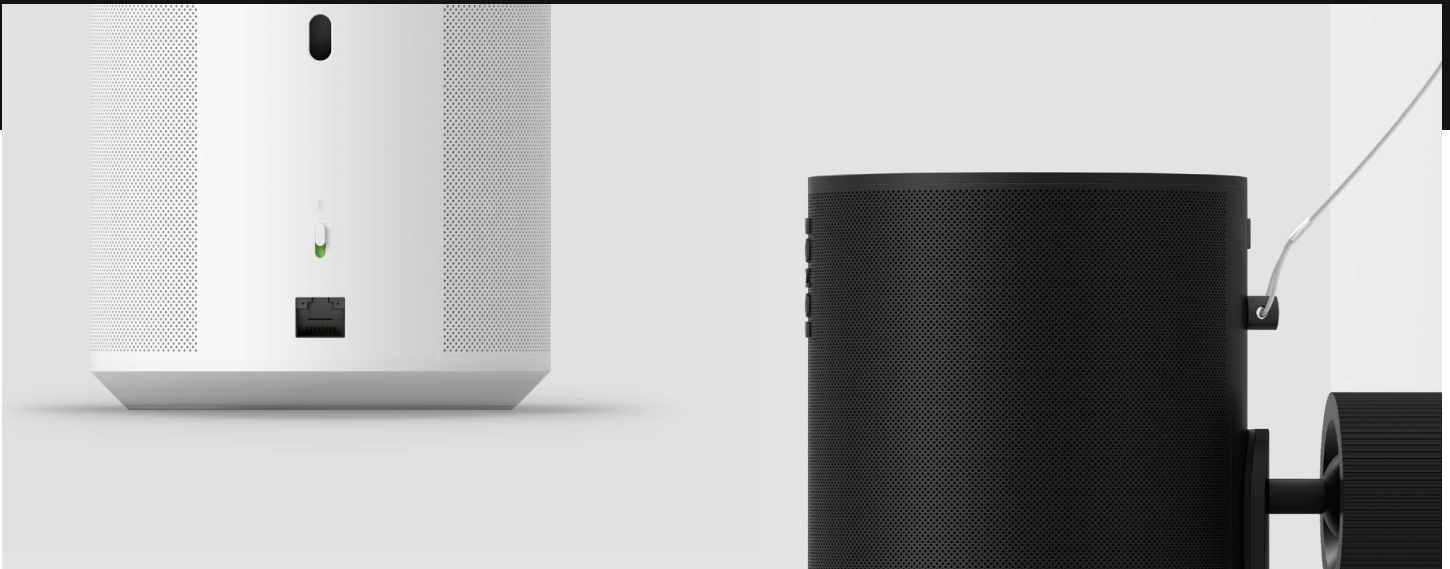


Era 100 Pro

Specification sheet

SONOS



Era 100 Pro Key Features

- Optimized for PoE+ and compatible with PoE
- Utilize zones for greater control
- Pro-grade surface mount (sold separately)
- Wired-first networking
- DSP automatically adjusts based on orientation
- Built-in threaded insert & optional eyebolt

Product Overview

The Sonos Era 100 Pro is a premium speaker designed for commercial and residential applications; bridging the gap between traditional smart speakers and fully installed architectural systems. Designed specifically for professional installations, it offers simplified setup, advanced connectivity, and robust control features. Era 100 Pro utilizes PoE, where a single Ethernet cable provides both power and audio, eliminating the need for additional wiring.

Zones can be created and controlled with the Sonos app, providing greater ease of use for large spaces. The Era 100 Pro Surface Mount (sold separately) provides adjustable, secure speaker positioning and an elegant, clutter-free aesthetic. An indexed ball joint allows repeatable articulation which stays locked in place over time. It offers $\pm 30^\circ$ pan and tilt and 360° rotation to optimise coverage in any space. Flexible cable management ensures a clean and organized solution. Era 100 Pro also comes with an optional safety eyebolt to help meet building code compliance, if required. The speaker is also compatible with over 100 streaming services, including Soundtrack Your Brand, Mood Media, Spotify, and Sonos Radio.

Additional features include Wi-Fi connectivity, three dedicated Class-D amplifiers driving custom designed transducers for rich, full-range sound, built-in microphones to support voice control and Trueplay tuning, and an Ethernet port for power and network connectivity with status LEDs. Available in black or white, Era 100 Pro offers a complete solution for hardware, content, and control.

Specifications

	Era 100 Pro
Low Frequency Driver	One 3.5 x 4.4 in / 90.8 x 111.9 mm carbon-filled polypropylene
High Frequency Drivers	Two 0.63 in / 16 mm silk dome
Frequency Range ¹	45 Hz-20 kHz ±3 dB 40 Hz-20 kHz -10 dB
Maximum Long-Term SPL ²	90dB @ 1 meter with PoE+
Maximum Short-Term SPL ³	98dB @ 1 meter with PoE+
Nominal Coverage Angle ⁴	240° horizontal x 140° vertical
Directivity Q ⁵	1.8
Directivity Index ⁵	2.5 dB
Connector Type	1 x RJ45
Power Method (Recommended, Compatible)	PoE+ (802.3at), PoE (802.3af)
Power Consumption (Max PoE+, Max PoE, Idle)	30W, 15.4W, 2.4W
Operating Temperature	32° to 104° F / (0° to 40° C)
Humidity Range	5-95% RH
Safety and Compliance	EN 62368-1:2014 / A11:2017, UL 62368-1 3rd Ed, CAN / CSA C22.2 No. 62368-1:19 3rd Ed.
Product Dimensions (W x H X D)	4.72 x 7.18 x 5.14 in / 120 x 182.5 x 130.5 mm
Net Weight (Each)	4.48 lb / 2.03 kg
Shipping Weight (Pair)	12.35 lb / 5.6 kg
Included Accessories	1x optional eyebolt per speaker
Wired Networking Interface	100BaseTX, Ethernet RJ45
Wireless Networking Interface ⁶	Compatible with WiFi 6. Connect to Wi-Fi with any 802.11a/b/g/n/ac/ax 2.4 GHz/5 GHz broadcast-capable router
Direct Streaming Formats	Bluetooth, Apple Airplay 2, Spotify Direct Control
Integrated Content Streaming	Amazon Music, Apple Music, Cloud Cover Music, Mood Media, Sonos Radio, Soundtrack Your Brand, Spotify, and many more. For a complete list, please visit: support.sonos.com/services

Accessories

Era 100 Pro Surface Mount White (sold separately)	E1PMPWW1
Era 100 Pro Surface Mount Black (sold separately)	E1PMPWW1BLK

¹ Measured in 4Pi anechoic space, on axis, ² Noise filtered to meet IEC60268-5, 6 dB crest factor (RMS), Z-weighted in 4Pi anechoic space, ³ Sine wave output on axis in 4Pi anechoic space, ⁴ Mounted in portrait orientation, ⁵ Measured in 4Pi anechoic space average 1 kHz to 16 kHz, ⁶ Additional information available in the Product Guide

Architect and Engineer Specifications

The loudspeaker shall be of surface mount design, consisting of one 3.5 x 4.4 in / 90.8 x 111.9 mm low frequency carbon-filled polypropylene cone driver and two 0.63 in / 16 mm high frequency silk dome drivers. The low frequency driver and high frequency drivers shall be arranged to provide optimal sound distribution.

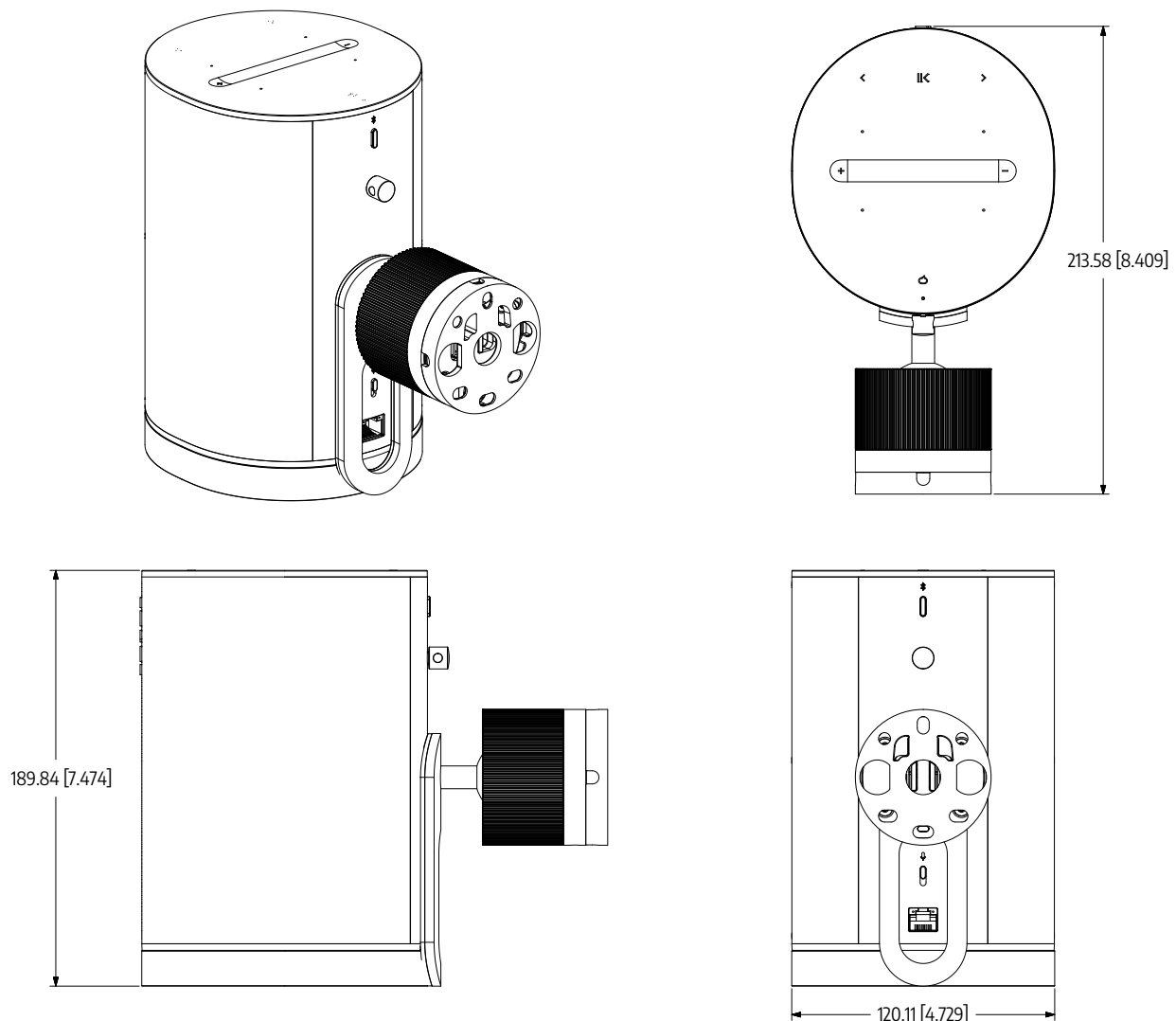
The loudspeaker shall be capable of meeting the following performance criteria: The measured midband sensitivity shall achieve a maximum long-term SPL of 90 dB @ 1 meter with PoE+ and a maximum short-term SPL of 98 dB @ 1 meter with PoE+. The frequency range shall be 45 Hz–20 kHz ± 3 dB and 40 Hz–20 kHz -10 dB. The nominal coverage angle shall be 240° horizontal x 140° vertical. The directivity Q shall be 1.8 and the directivity index shall be 2.5 dB.

The loudspeaker shall feature a single RJ45 connector type for network connectivity. The power method shall be compatible with PoE+ (802.3at) and PoE (802.3af), with power consumption rated at 30W maximum for PoE+, 15.4W maximum for PoE, and 2.4W at idle.

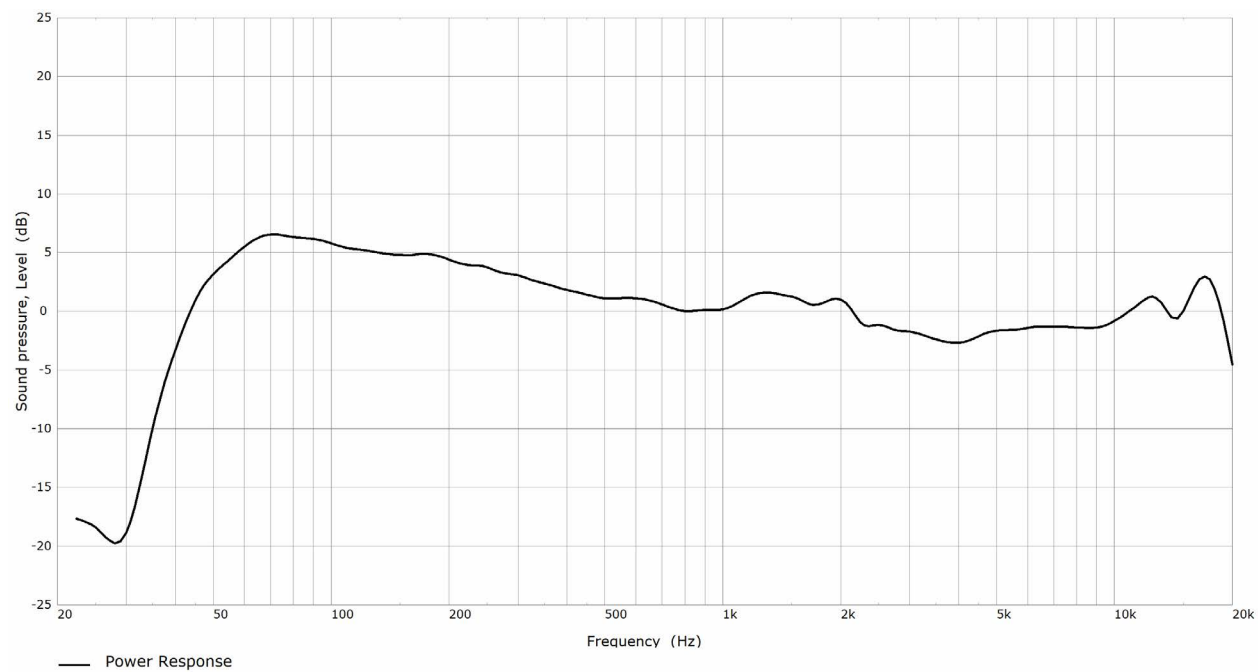
The product dimensions shall be 4.72 x 7.18 x 5.14 in / 120 x 182.5 x 130.5 mm, and the net weight shall not exceed 4.48 lb / 2.03 kg. The shipping weight for a pair shall not exceed 12.35 lb / 5.6 kg. The loudspeaker shall include two optional eyebolts.

The loudspeaker shall offer a wired networking interface with 100BaseTX, Ethernet RJ45, and a wireless networking interface compatible with WiFi 6, supporting any 802.11a/b/g/n/ac/ax 2.4 GHz/5 GHz broadcast-capable router. Direct streaming formats shall include Bluetooth, Airplay 2, and Spotify Direct Control. Integrated content streaming services shall include Amazon Music, Apple Music, Cloud Cover Music, Mood Media, Sonos Radio, Soundtrack Your Brand and Spotify.

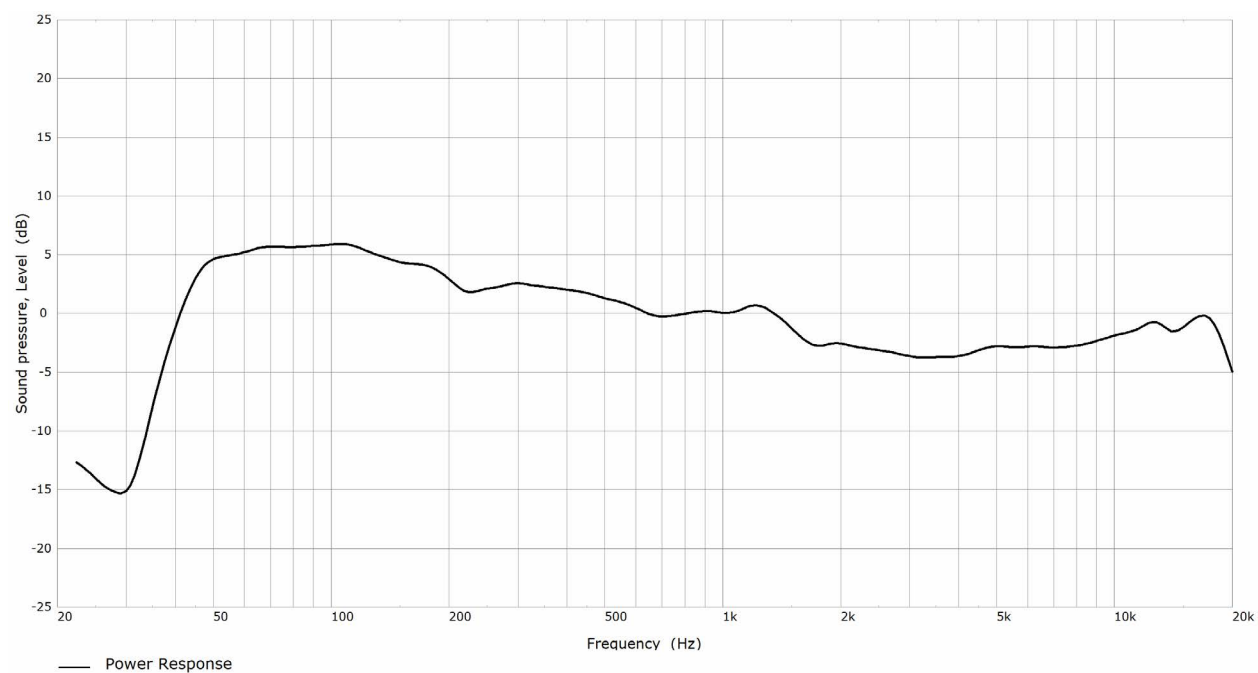
The loudspeaker shall be the Sonos Era 100 Pro.



Power Response ($\frac{1}{3}$ octave smoothing)

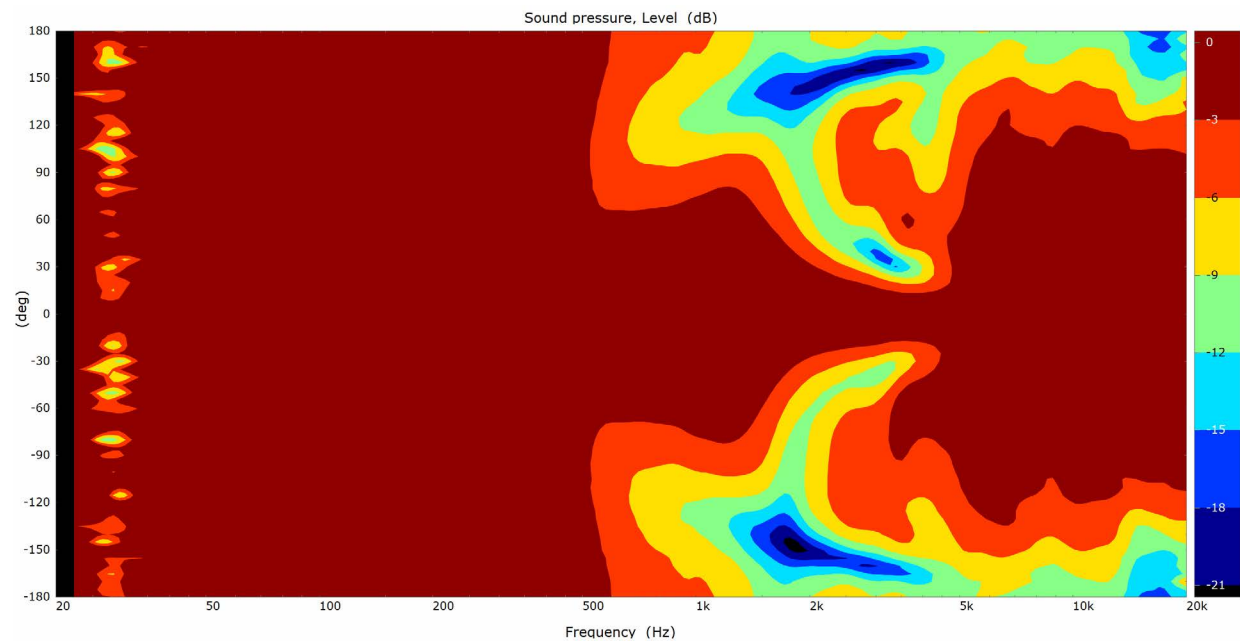


Portrait orientation

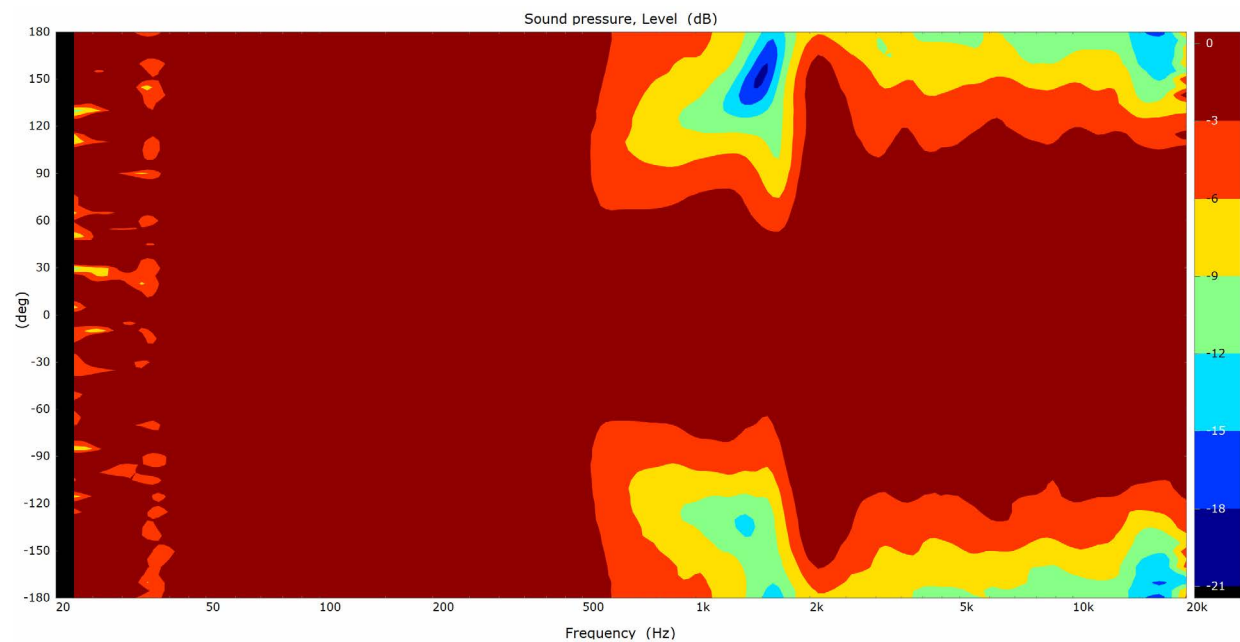


Landscape and ceiling-mounted orientation

Directivity Plot (1/3 octave smoothing)



Portrait orientation



Landscape and ceiling-mounted orientation

SONOS